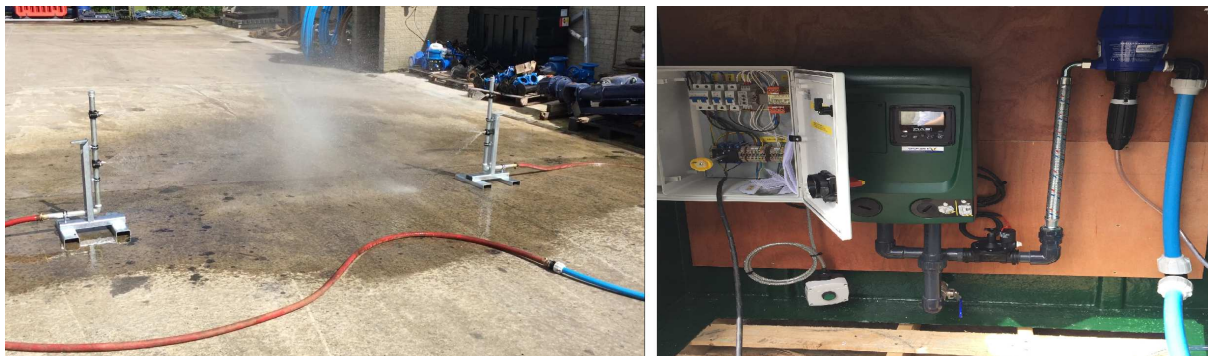


## Versatile De-contamination wash/spray system

### Fully automatic self-contained system



#### To include

- 1 X 1200mm X 1200mm X 1200mm green GRP kiosk, with integral 500L water storage tank
- 1 X Variable speed drive sy Box Mini pump system
- 1 X Automatic chemical dosing pump
- 2 X Free standing spray stands C/W nozzles, 2X 2M 19mm connecting hose
- 25M X 32mm MDPE pipe and fittings (Kiosk to spray stands)
- 1 X Remote start switch and run timer 24v

#### To be supplied by others

Civil works, 240V 13amp power supply and mains water supply to kiosk, small cable duct from kiosk to remote switch location for low voltage cable, drum of chemical disinfectant. Installation etc.